



LUXE ATELIER

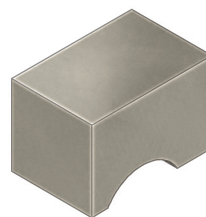
MILANO



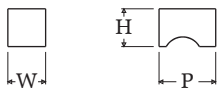
Pomolino Serie 546
546 Series Cabinet Knob

Dimensioni
Dimensions

	W	H	P
S	15	15	25
M	20	20	30
L	25	25	35



Dimensioni in millimetri
Dimensions given in millimeters



Fornito con vite M4.
Disponibile in tutte le finiture standard.
Dimensioni e finiture su misura disponibili su richiesta.

Regularly furnished with M4 screw.

Additional sizes available by special order. Available in standard and custom finishes.